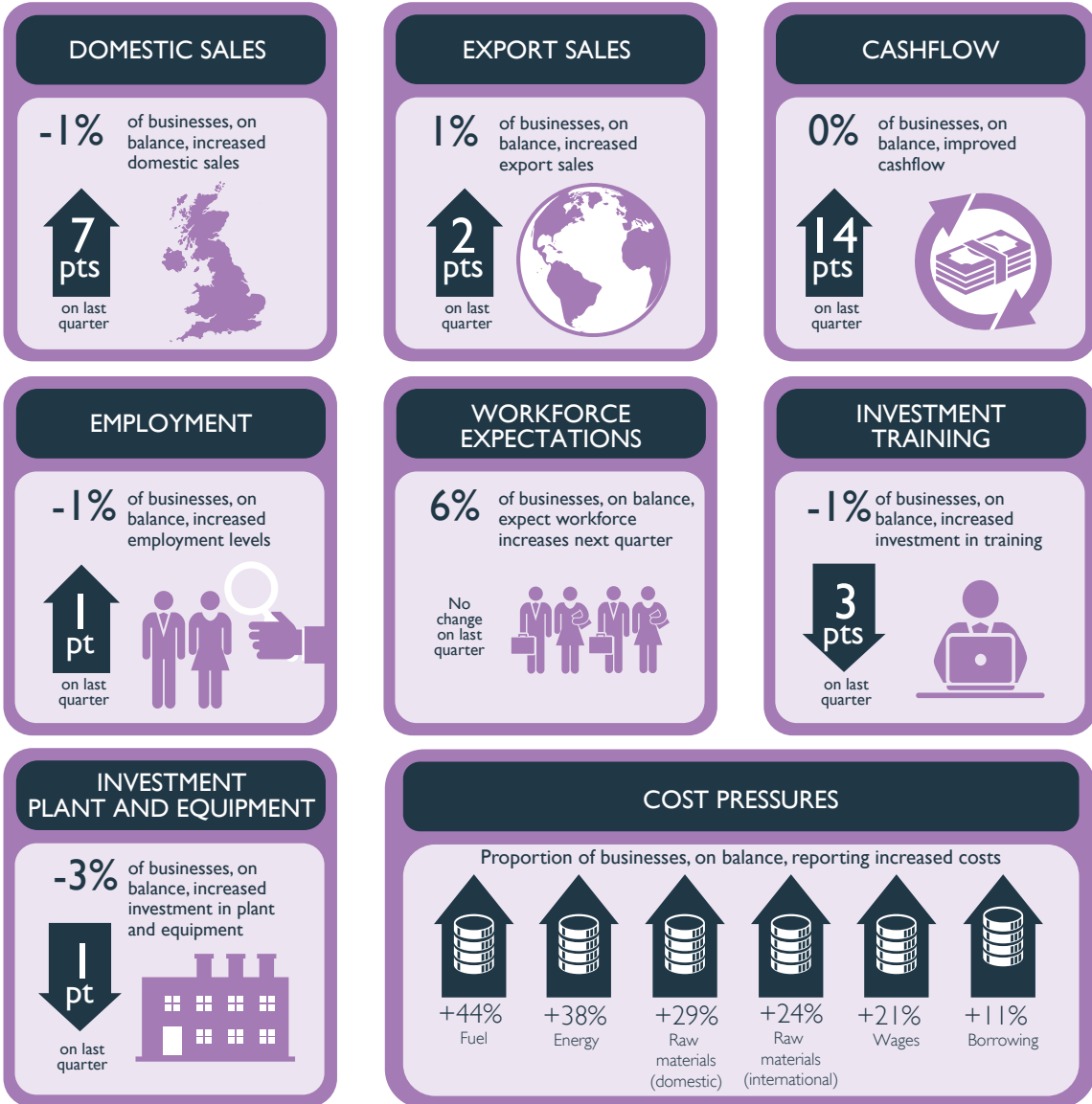


## CAPITAL 500: LONDON QUARTERLY ECONOMIC SURVEY, Q2 2019

ComRes surveyed a total of 503 London business leaders between 10 May and 11 June 2019. All data has been weighted to be representative of all London businesses by company size and broad industry sector.

The balance figures represent the percentage of firms that reported an increase minus the percentage that reported a decrease. The arrow figures represent the percentage point change in the balance on the previous quarter.

### PERFORMANCE LAST QUARTER



### EXPECTATIONS FOR NEXT 12 MONTHS

