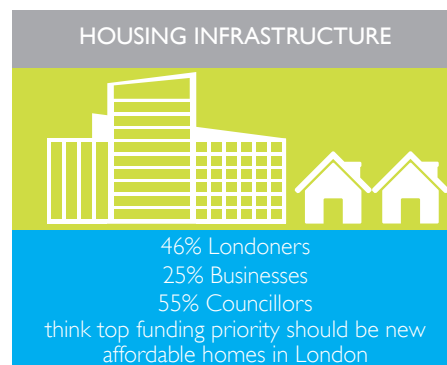


## WHO PAYS FOR LONDON'S INFRASTRUCTURE?

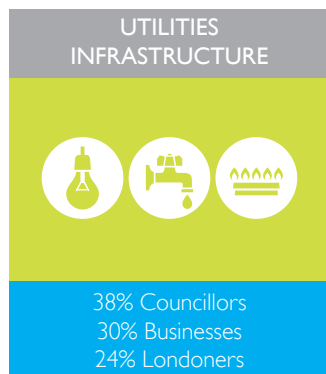
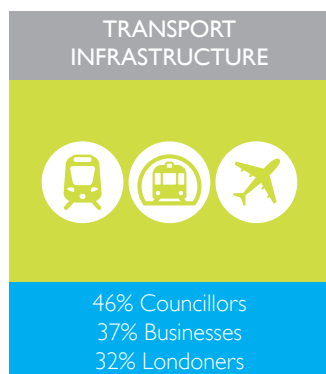
ComRes undertook the polling for LCCI and interviewed 1,016 London adults, 510 London business decision makers, and 156 London Councillors online in May 2015. For more information on London Tomorrow, please visit [www.londonchamber.co.uk/londontomorrow](http://www.londonchamber.co.uk/londontomorrow).

## INFRASTRUCTURE PRIORITIES IN LONDON



## LONDON AS A MAJOR GLOBAL CITY

LONDON PERFORMS WORSE THAN EXPECTED IN ALL AREAS



An initiative by:

**LONDON CHAMBER**  
COMMERCE OF AND INDUSTRY

CONNECT. INFLUENCE. SUPPORT.

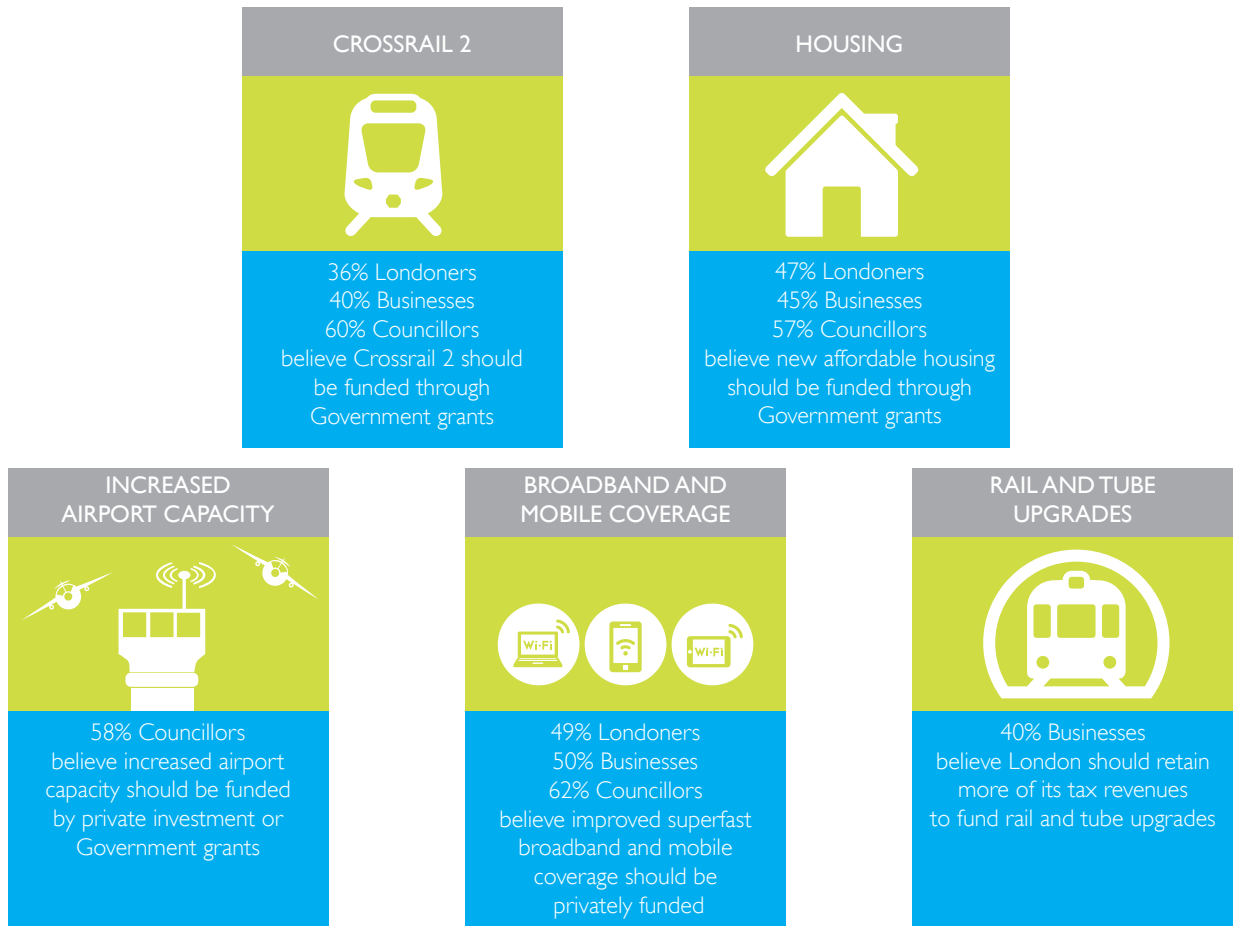
In association with:

**EY** Building a better working world

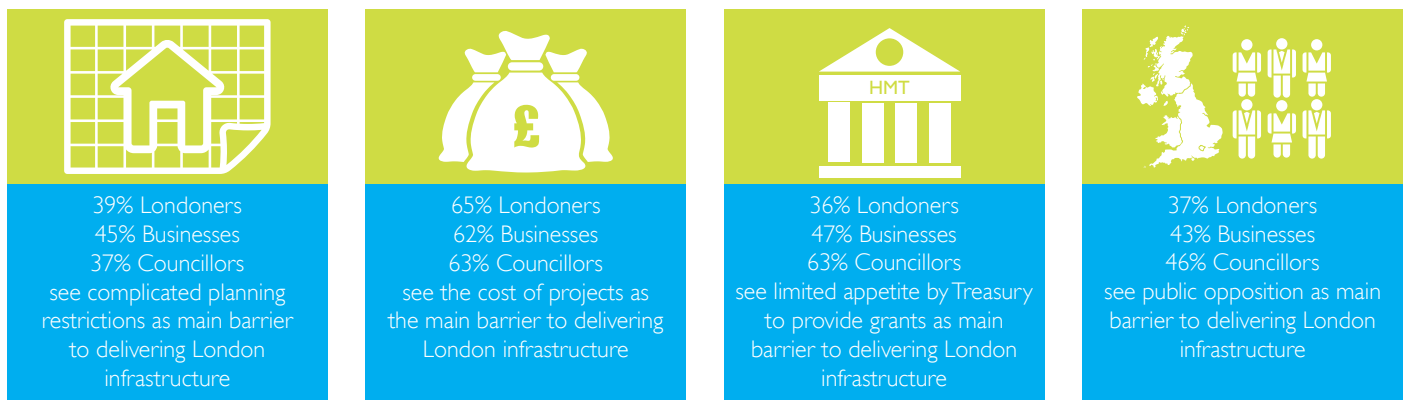
Supported by:

**London City Airport**  
Get closer.

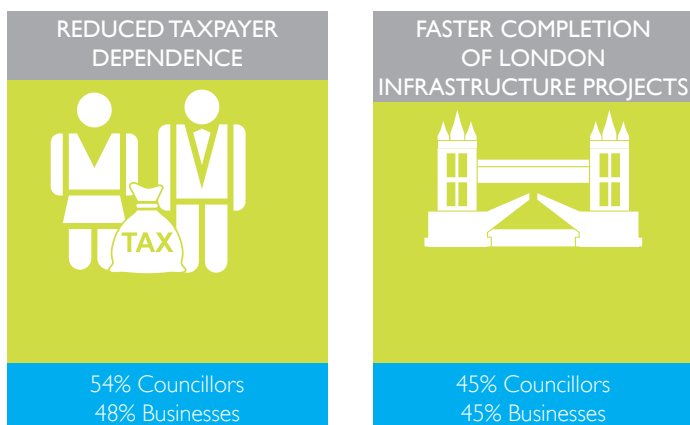
## WHO SHOULD FUND?



## BARRIERS TO DELIVERING LONDON INFRASTRUCTURE



## BENEFITS OF JOINT PUBLIC/PRIVATE SECTOR FUNDING



## ENCOURAGING GREATER PRIVATE INVESTMENT

