


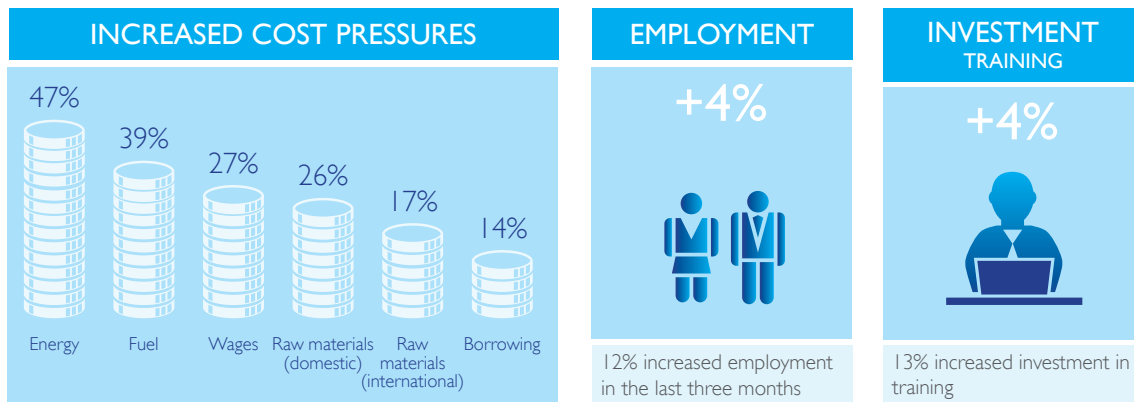
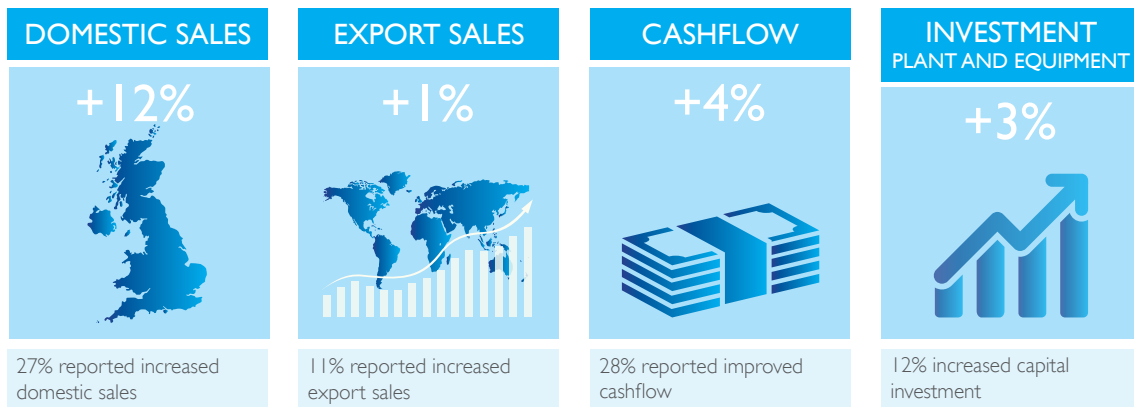
CAPITAL 500: LONDON QUARTERLY ECONOMIC SURVEY

In partnership with  **COMRES**

QUARTER 2 2014: RESULTS SUMMARY

ComRes surveyed a total of 506 London business leaders between 19 May and 11 June 2014. All data has been weighted to be representative of all London businesses by company size. The balance figures represent the percentage of firms that reported an increase minus the percentage that reported a decrease.

Q2 2014 PERFORMANCE



LOOKING AHEAD

