


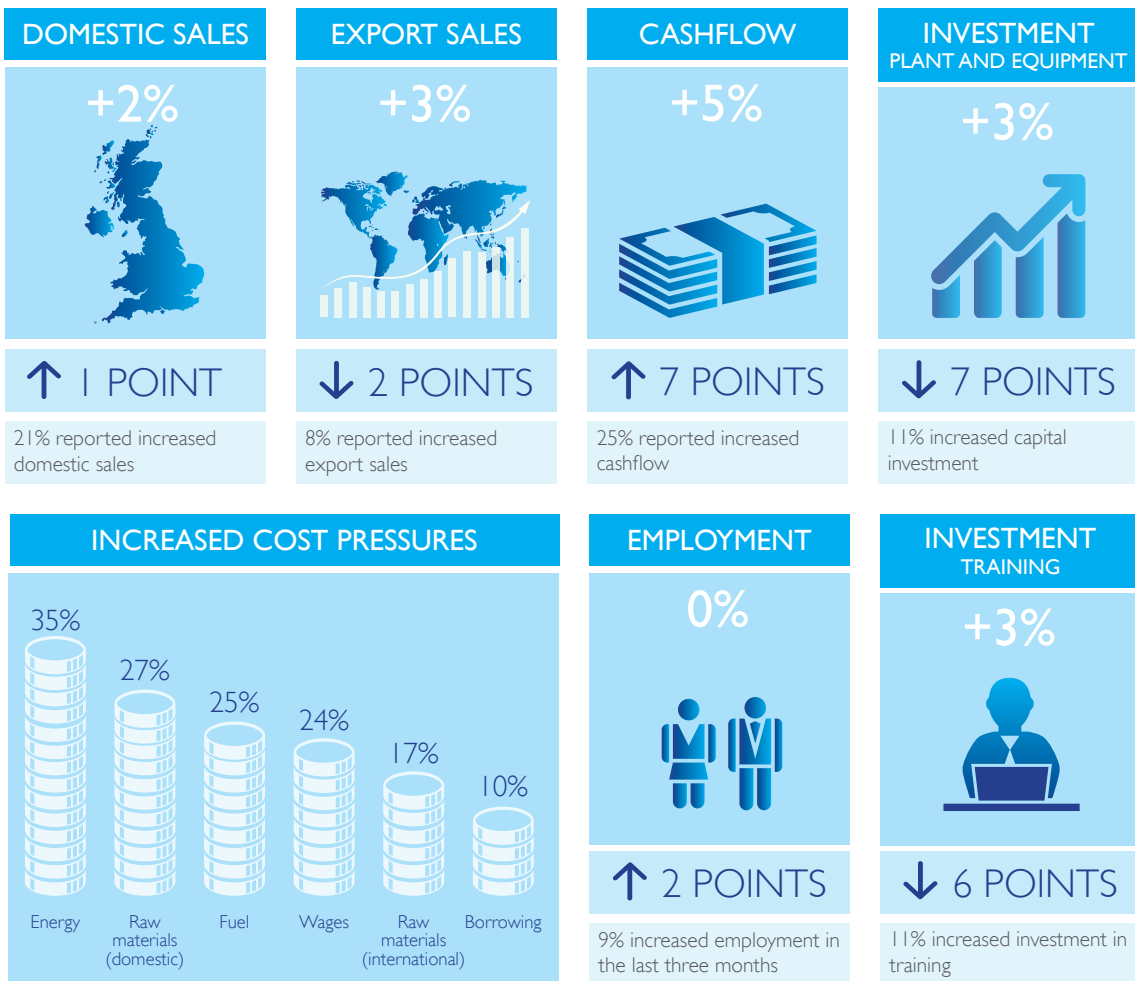
CAPITAL 500: LONDON QUARTERLY ECONOMIC SURVEY

In partnership with  COMRES

QUARTER 4 2014: RESULTS SUMMARY

ComRes surveyed a total of 518 London business leaders between 6 November and 26 November 2014. All data has been weighted to be representative of all London businesses by company size and sector. The balance figures represent the percentage of firms that reported an increase minus the percentage that reported a decrease.

Q4 2014 PERFORMANCE



LOOKING AHEAD

