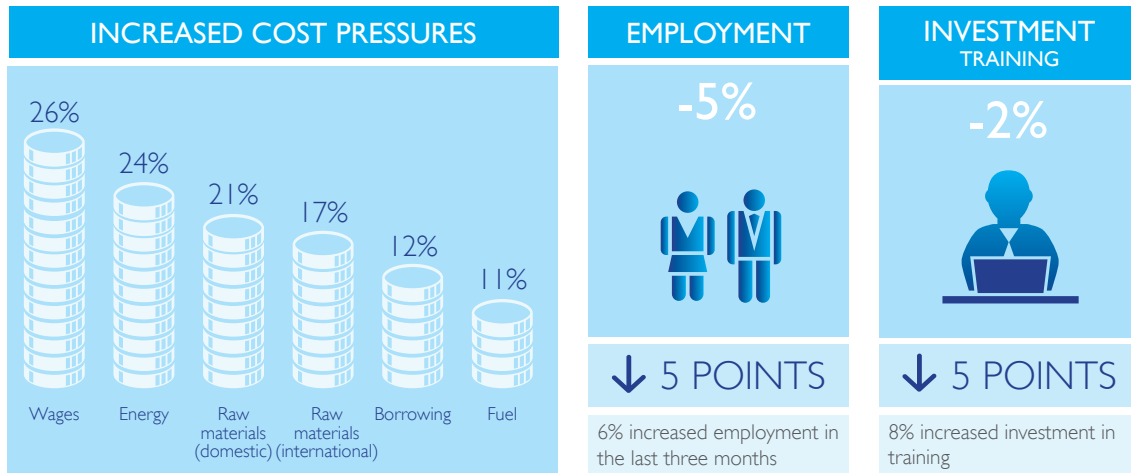
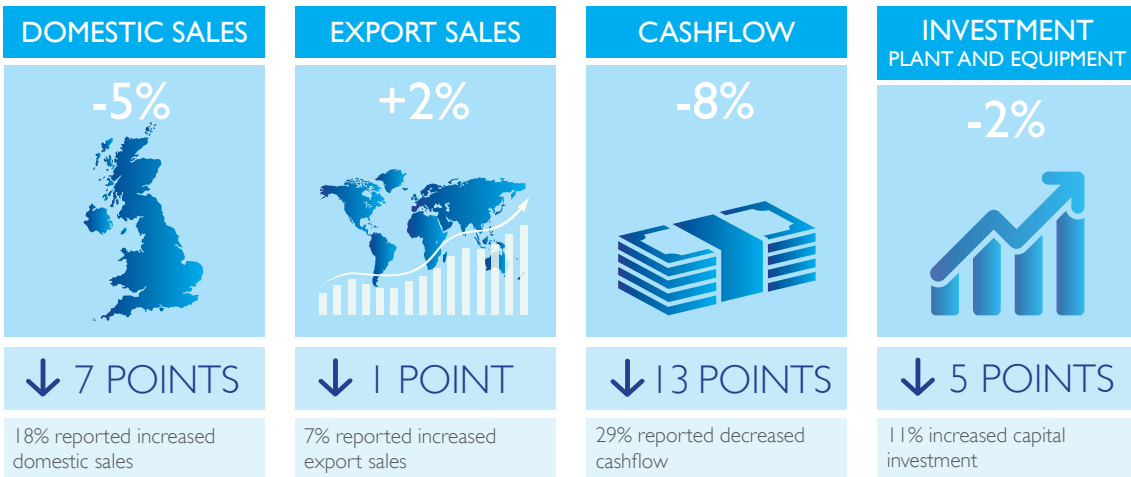


CAPITAL 500: LONDON QUARTERLY ECONOMIC SURVEY

QUARTER 1 2015: RESULTS SUMMARY

ComRes surveyed a total of 503 London business leaders between 29 January and 16 February 2015. All data has been weighted to be representative of all London businesses by company size and sector. The balance figures represent the percentage of firms that reported an increase minus the percentage that reported a decrease.

Q1 2015 PERFORMANCE



LOOKING AHEAD

