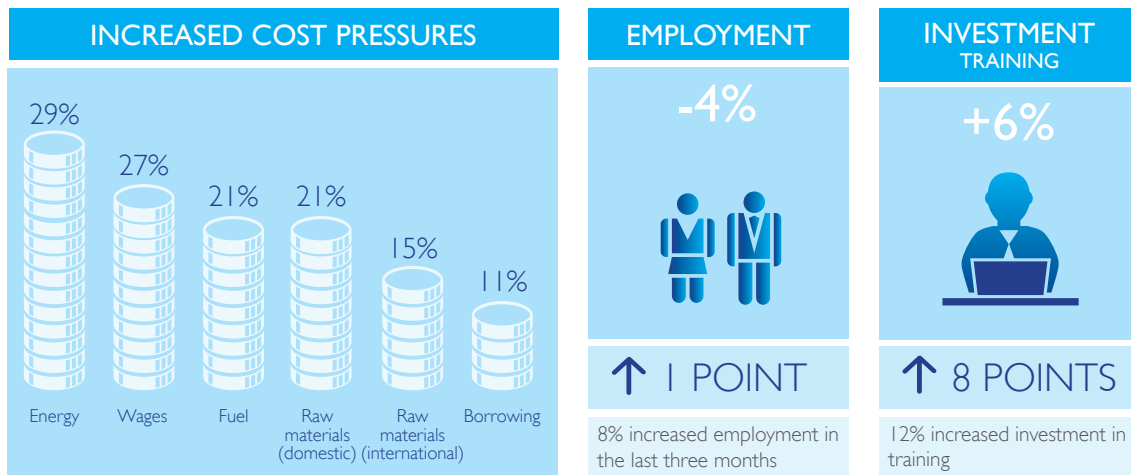
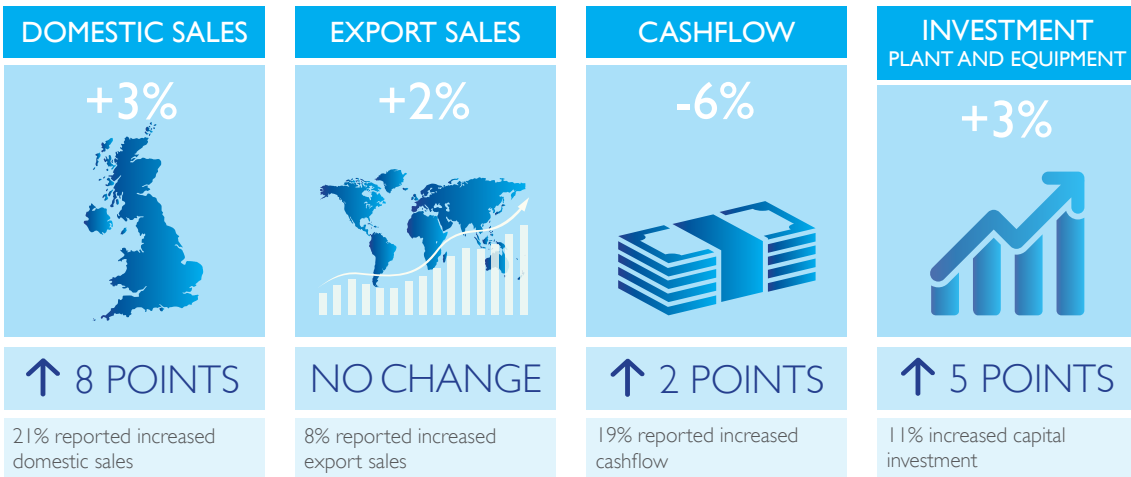


CAPITAL 500: LONDON QUARTERLY ECONOMIC SURVEY

QUARTER 2 2015: RESULTS SUMMARY

ComRes surveyed a total of 510 London business leaders between 7 and 20 May 2015. All data has been weighted to be representative of all London businesses by company size and sector. The balance figures represent the percentage of firms that reported an increase minus the percentage that reported a decrease.

Q2 2015 PERFORMANCE



LOOKING AHEAD

